



EFTS Series

EVOTEK Return/ Suction Filters

Product Description

- Operating pressure up to 10 bar
- 80 l/min max. flow rate
- installation in Tank-top
- application in Waste management trucks, Mobile cranes, Power packs, Wheeled loaders and Drilling equipment
- compliant with industry relevant ISO standards(see ISO test below)

Technical Specifications

Application

Tank-top return filter

Port Sizes:

Threaded Connections according to BSP and NPT standard in 1" and SAE20

Flow Rate:

max. 80 l/min

Operating Pressure:

max. 10bar

Burst Pressure:

min. 30 bar

Element Collapse Pressure:

10 bar

By-pass Opening Pressure:

$\Delta p = 2.5 \text{ bar} \pm 10\%$

Material

Seals:

NBR or FPM (-25°C to 100°C)

Filter Head:

Aluminium

Filter Bowl:

Aluminium

Compatibility:

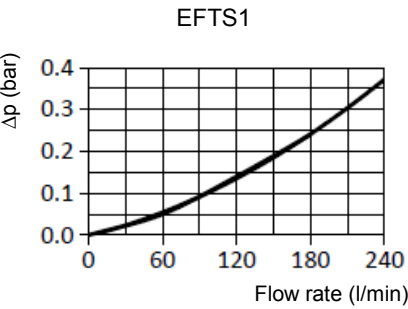
Suitable for mineral oils, lubrication oils, non-flam fluids, synthetic and rapidly biodegradable oils (for use with water or other fields please contact our technical department)

Tested according to ISO standards:

ISO2941 Collapse/burst resistance
 ISO2942 Fabrication integrity
 ISO2943 Material compatibility integrity
 ISO3723 Method for end load test
 ISO3724 Flow fatigue characteristics
 ISO3968 Pressure Drop vs. Flow Rate
 ISO16889 Multi-Pass Test

EFTS Return Filter Series

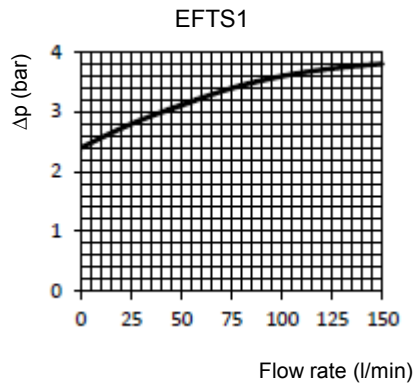
Pressure Drop Graphs (Δp)
Pressure Drop of Filter Housing only



Graph of oil flow velocity
(we recommend to select size of the filter considering range of oil velocity between 1.5 to 3 m/s for return series)



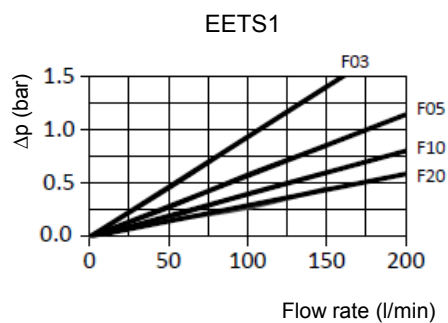
Pressure drop graph on by-pass valve



EFTS Return Filter Series

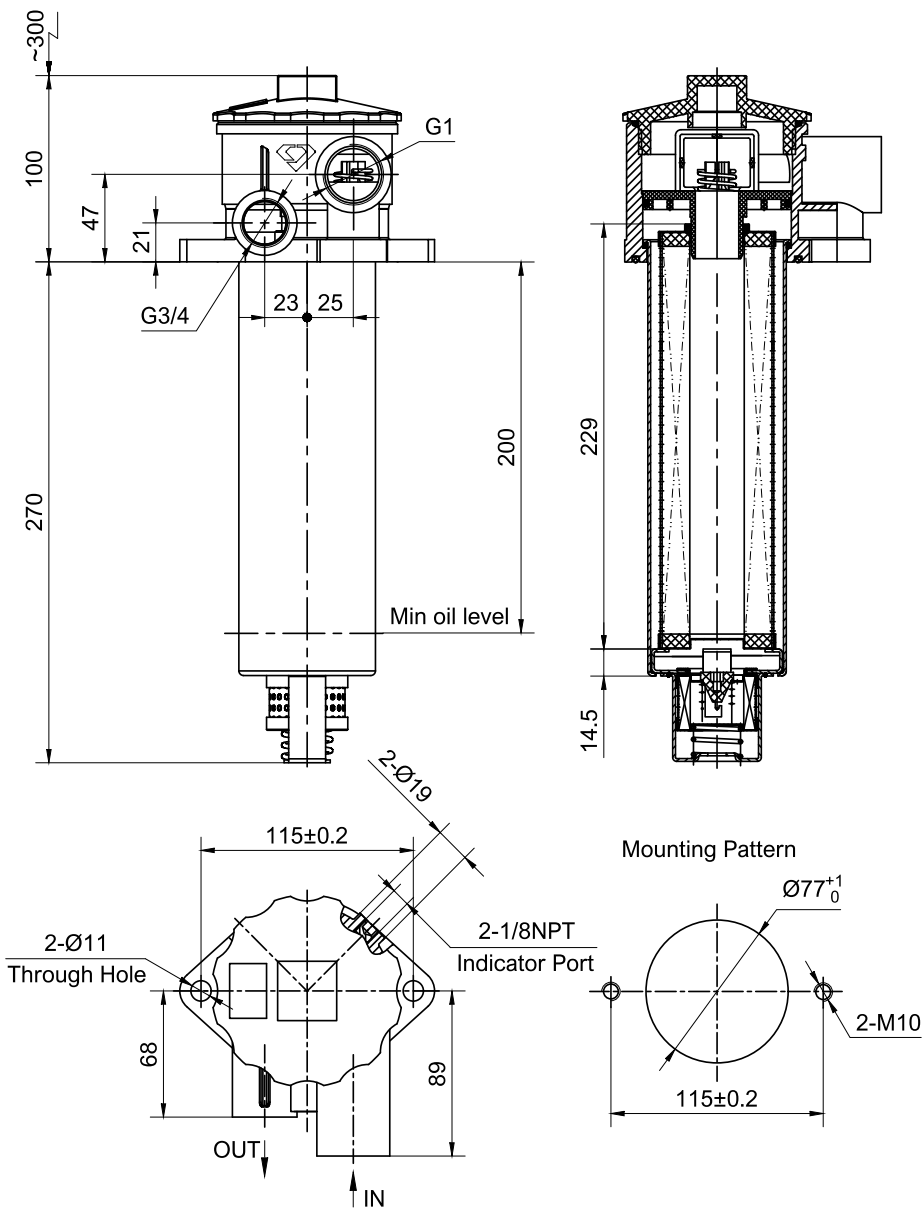
Pressure Drop Graphs (Δp)

Pressure Drop with Clean Filter Elements (F filter media)



EFTS Return Filter Series

Technical Drawings and Dimension



EFTS Return Filter Series

Order Codes

Filter Assembly Series	A	B	C	D	-	E	-	F	Element Series	A	D	E
EFTS	1	BD	07	B	-	Y10	-	R20	EETS	1	B	Y10

Select the code for each filter (or element) feature according to your requirements and place it in the sequence (see example above) to create the corresponding product order code.

A Size Flow Rate				D Seal			
1	80 l/min			B		NBR	
				V		FPM	
B Connection Ports				E Media Material Filtration Collapse Pressure			
A20	SAE20			F10	Fiberglass	12µm	10 bar
BD	BSP 1 "			F20	Fiberglass	21µm	10 bar
ND	NPT 1 "			Y 10	Wire Mesh	10µm	10 bar
C By-pass Valve				F Indicator Connection			
07	2.5 bar			0	No		
				R20	2.0 bar Pressure Switch		1/8NPT Thread

Notes

[illegible]