



EFSR Series

EVOTEK Suction Filters

Product Description

- 600 l/min max. flow rate
- installation in suction line
- application in Mobile Equipment, Hydrostatic Drives, Power Units and agricultural machines
- compliant with industry relevant ISO standards(see ISO test below)

Technical Specifications

Application

Port Sizes:

Flow Rate:

Element Collapse Pressure:

Material

Seals:

Filter Head:

Filter Bowl:

Compatibility:

Tested according to ISO standards:

Suction Filters

Threaded Connections according to
SAE DN65 / SAE DN80 /DN100 3000psi
max. 600 l/min

1 bar

NBR or FPM (-25°C to 100°C)

Aluminium

Aluminium

Suitable for mineral oils, lubrication oils, non-flam fluids, synthetic and rapidly biodegradable oils (for use with water or other fields please contact our technical department)

ISO2941 Collapse/burst resistance

ISO2942 Fabrication integrity

ISO2943 Material compatibility integrity

ISO3723 Method for end load test

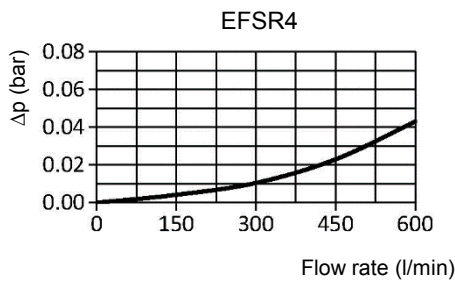
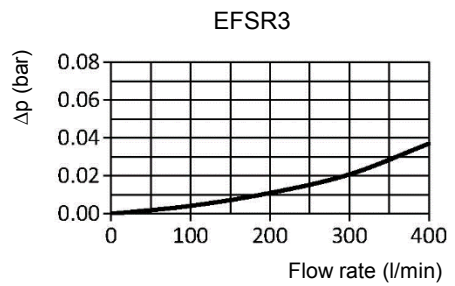
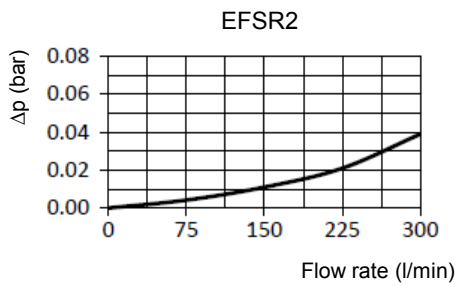
ISO3724 Flow fatigue characteristics

ISO3968 Pressure Drop vs. Flow Rate

ISO16889 Multi-Pass Test

EFSR Suction Filter Series

Pressure Drop Graphs (Δp)
Pressure Drop of Filter Housing only



Graph of oil flow velocity
(we recommend to select size of the filter considering range of oil velocity between 0.5 to 1.5 m/s for pressure series)

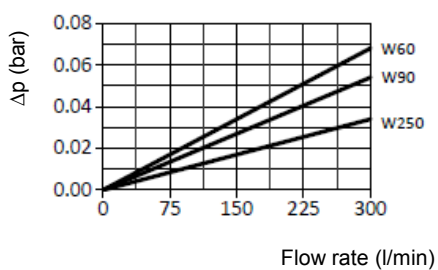


EFSR Suction Filter

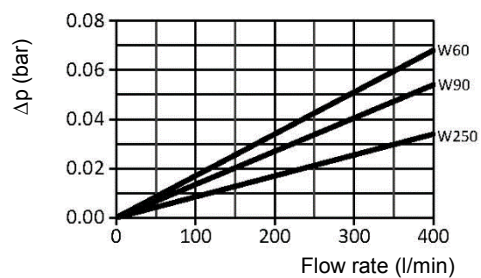
Pressure Drop Graphs (Δp)

Pressure Drop with Clean Filter Elements (W filter media)

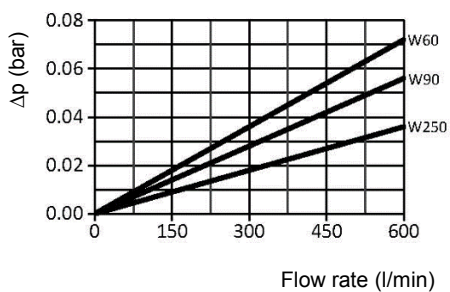
EESR2



EESR3



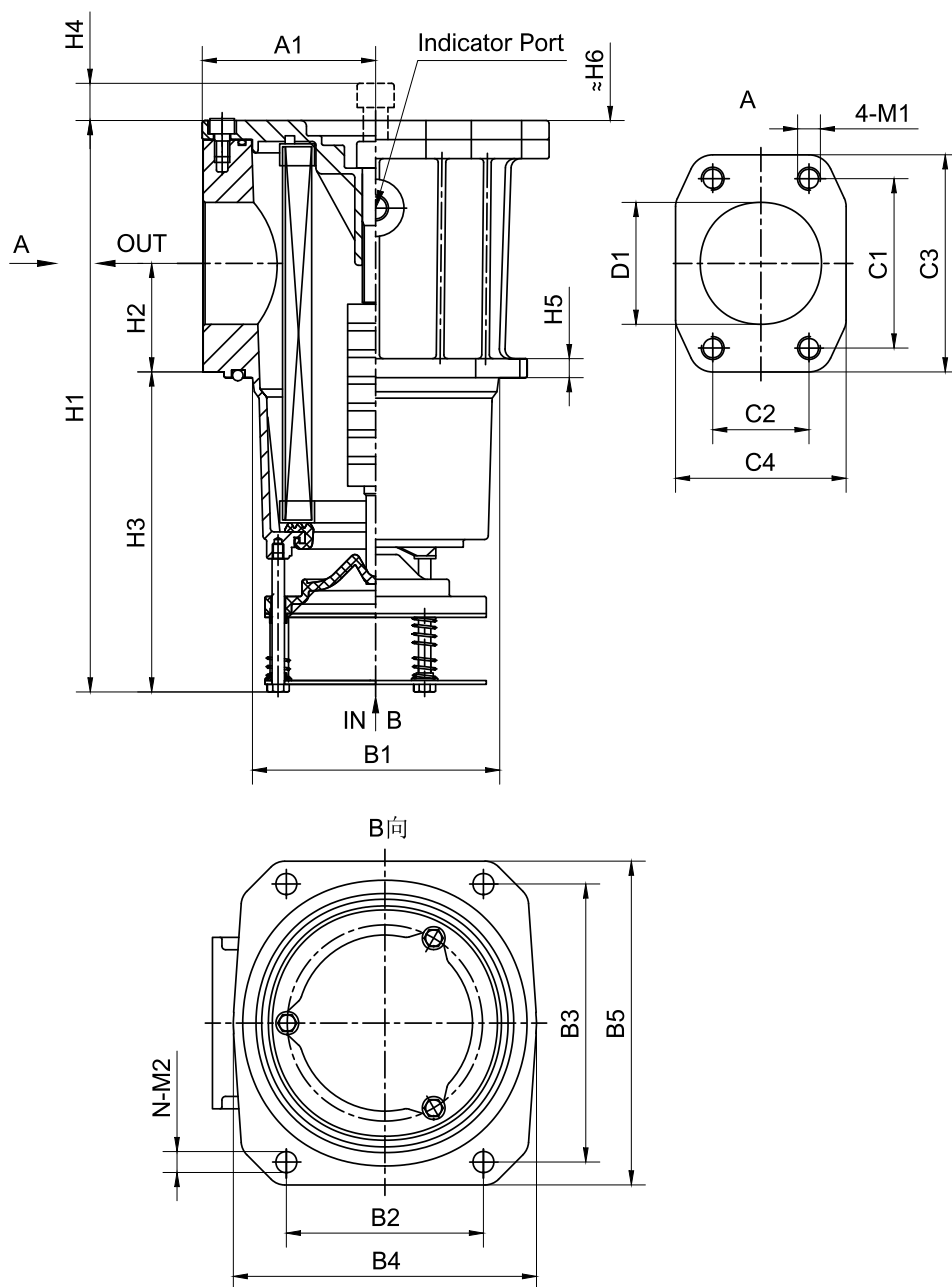
EESR4



EFSR Suction Filter Series

Technical Drawings and Dimension

EFSR2



Threaded Connection Ports

Connection Port
(SAE)
inch

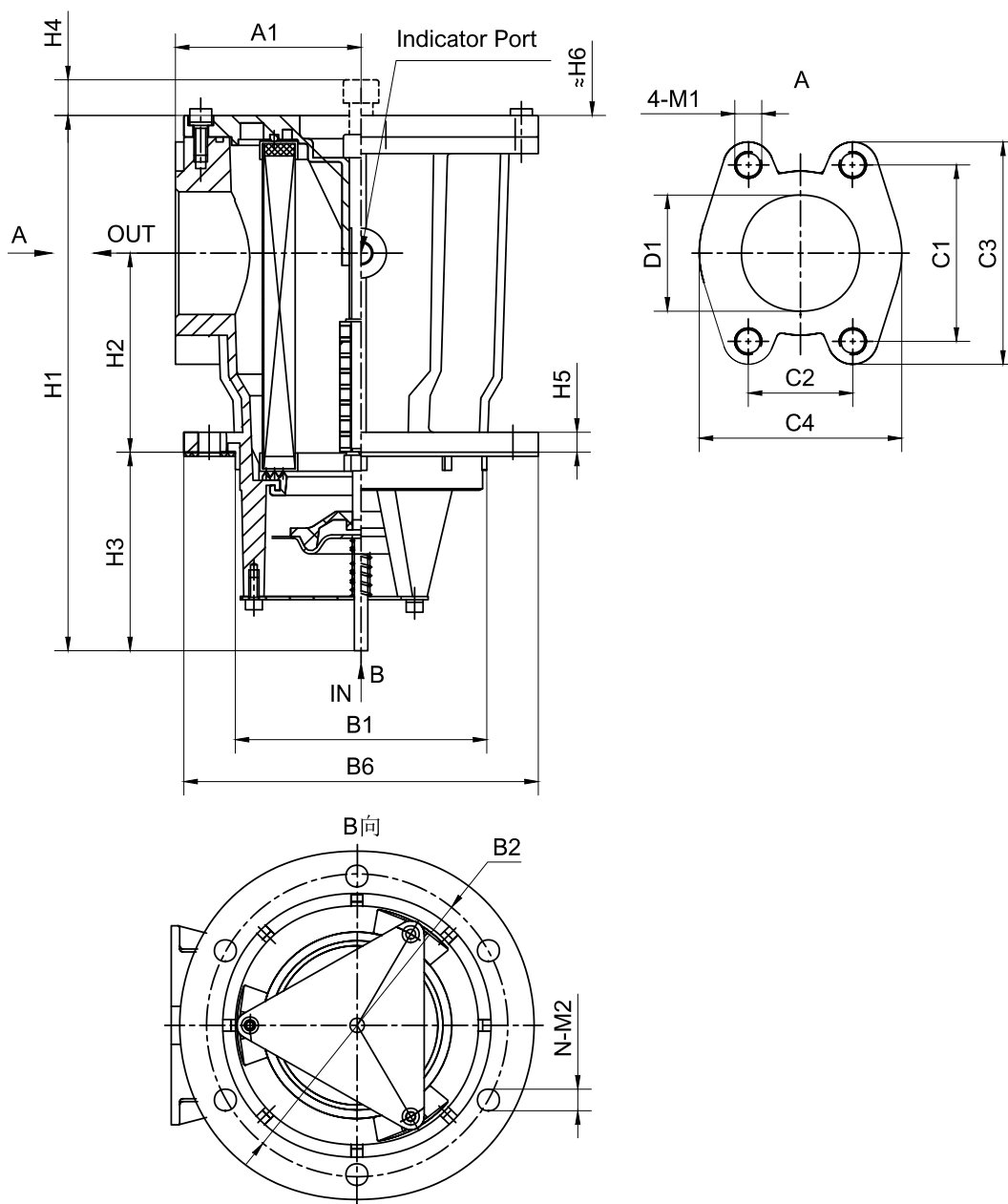
Height
mm

Type	D1	A1	B1	B2	B3	B4	B5	C1	C2	C3	C4	H1	H2	H3	H4	H5	H6	M1	M2	N
EFSR2	SAE DN 65 3000psi	91	130	104	146	160	170	88.9	50.8	114	90	300	60	165	10	10	300	M12	11	4

EFSR Suction Filter Series

Technical Drawings and Dimension

EFSR3&EFSR4



Threaded Connection Ports

Connection Port
(SAE)
inch

Height
mm

Type	D1	A1	B1	B2	B6	C1	C2	C3	C4	H1	H2	H3	H4	H5	H6	M1	M2	N
EFSR3	SAE DN 80 3000psi	110	149	180	210	106.4	61.9	120	134	320	122	120	15	13	300	M16	13	6
EFSR4	SAE DN 100 3000psi	120	180	210	242	130.2	77.8	146	162	320	122	120	15	13	300	M16	13	6

EFSR Suction Filter Series

Order Codes

Filter Assembly Series		A	B	C	-	D	-	E
EFSR		4	FL	B	-	W90	-	VA
Element Series		A	D					
EESR		4	W90					

Select the code for each filter (or element) feature according to your requirements and place it in the sequence (see example above) to create the corresponding product order code.

A Size	Flow Rate
2	300 l/min
3	400 l/min
4	600 l/min

B Connection Ports	
FG	SAE DN65(3000psi)
FH	SAE DN80(3000psi)
FL	SAE DN100(3000psi)

C Seal	
B	NBR
V	FPM

D Media	Material	Filtration	Collapse Pressure
W60	Wire Mesh	60µm	1bar
W90	Wire Mesh	90µm	1 bar
W125	Wire Mesh	125µm	1 bar

E Indicator			Connection
00	No		
VA	-1~0bar	vacuum gauge	1/8NPT Thread
S02	-0.2bar	vacuum switch	1/8NPT Thread