



## EFSP Series

### EVOTEK Suction Filters

#### Product Description

- 100 l/min max. flow rate
- installation in-tank mounting
- application in the suction line of the pumps of hydraulic systems resp. upstream of the charge pumps of hydrostatic drives.
- compliant with industry relevant ISO standards(see ISO test below)

#### Technical Specifications

Application

Port Sizes:

Flow Rate:

Element Collapse Pressure:

By-pass Opening Pressure:

Material

Seals:

Filter Head:

Filter Bowl:

Cover:

Compatibility:

Tested according to ISO standards:

Suction Filters

Threaded Connections according to BSP and NPT standard in 1¼" , SAE20,SAE DN40 3000psi

max. 100 l/min

1 bar

$\Delta p=0.3 \text{ bar} \pm 10\%$

NBR or FPM (-25°C to 100°C)

Aluminium

Zinc plated steel

Polyamide

Suitable for mineral oils, lubrication oils, non-flam fluids, synthetic and rapidly biodegradable oils (for use with water or other fields please contact our technical department)

ISO2941 Collapse/burst resistance

ISO2942 Fabrication integrity

ISO2943 Material compatibility integrity

ISO3723 Method for end load test

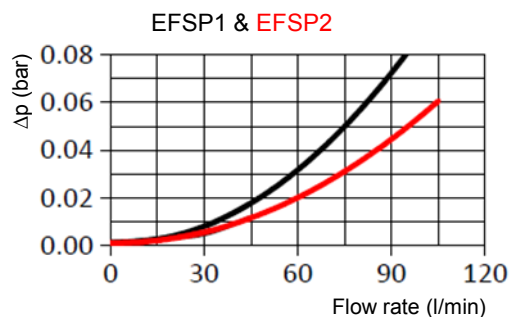
ISO3724 Flow fatigue characteristics

ISO3968 Pressure Drop vs. Flow Rate

## EFSP Suction Filters Series

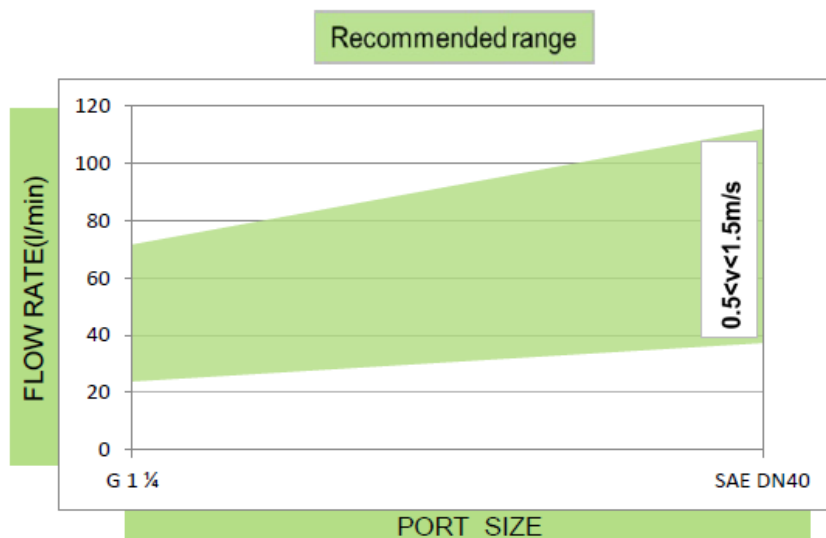
Pressure Drop Graphs ( $\Delta p$ )

Pressure Drop of Filter Housing only



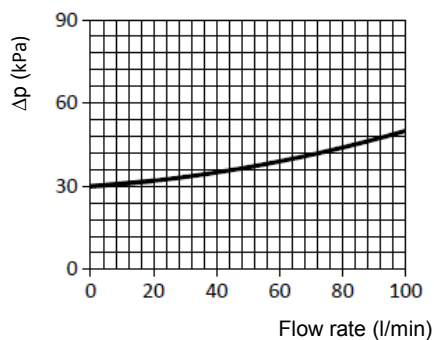
Graph of oil flow velocity

(we recommend to select size of the filter considering range of oil velocity between 0.5 to 1.5 m/s for pressure series)



Pressure drop graph on by-pass valve

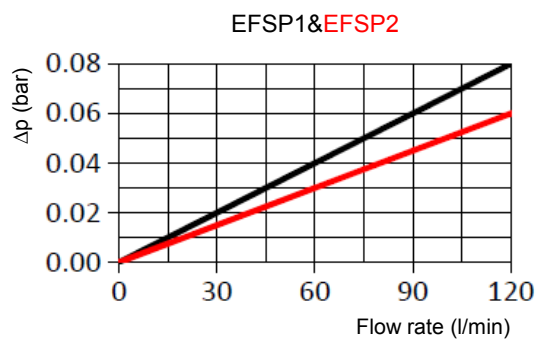
EFSP1 & 2



## EFSP Suction Filters Series

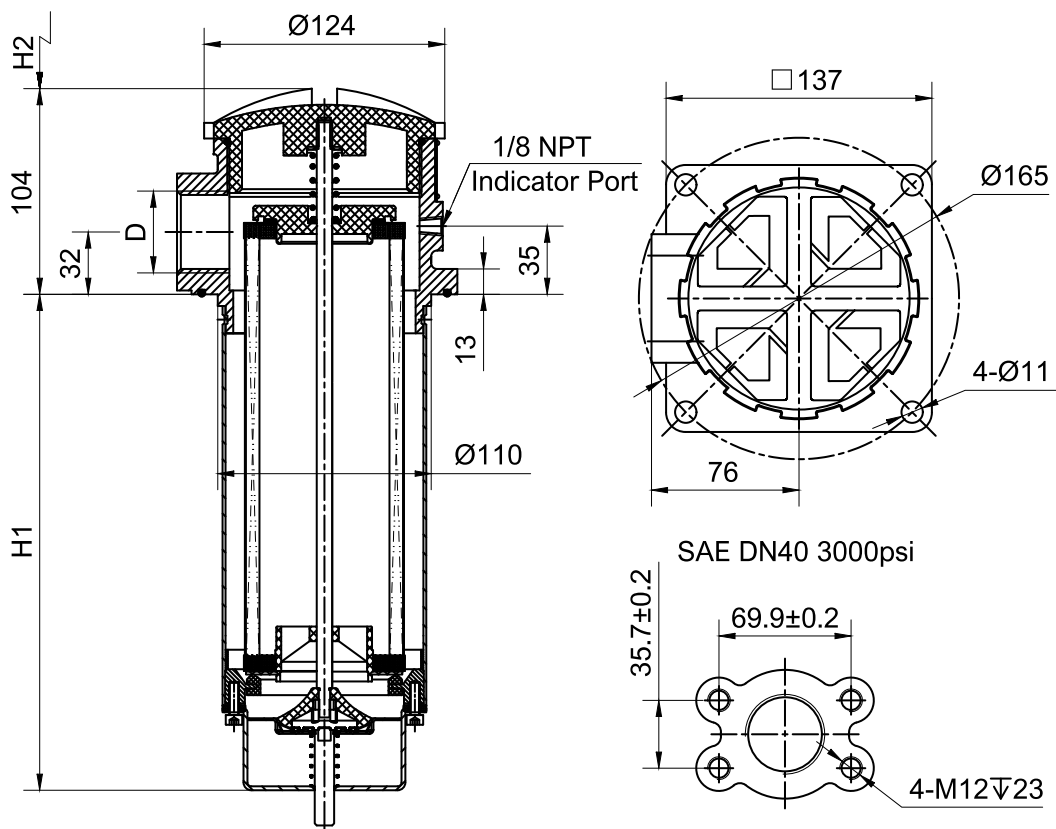
### Pressure Drop Graphs ( $\Delta p$ )

Pressure Drop with Clean Filter Elements (wire mesh filter media)



## EFSP Suction Filters Series

## Technical Drawings and Dimension



## Threaded Connection Ports

Type	Connection Port (BSP/NPT/SAE)	Height	
	inch	mm	
EFSP1	D	H1	H2
	1 1/4"	256	330
EFSP2	SAE20		
	SAE DN40 3000 psi	500	570

## EFSP Suction Filters Series

### Order Codes

Filter Assembly Series	A	B	C	-	D	-	E	Element Series	A	D
EFSP	1	BE	B	-	W60	-	VA	EESP	1	W60

Select the code for each filter (or element) feature according to your requirements and place it in the sequence (see example above) to create the corresponding product order code.

#### A Size Flow Rate

1	70 l/min
2	100 l/min

#### B Connection Ports

A20	SAE20
BE	BSP 1¼"
NE	NPT 1¼"
FE	SAE DN40 3000 psi

#### C Seal

B	NBR
V	FPM

#### D Media Material Filtration Collapse Pressure

W25	Wire Mesh	25µm	1 bar
W60	Wire Mesh	60µm	1 bar
W90	Wire Mesh	90µm	1 bar

#### E Indicator

00	No	Connection
VA	-1 ~ 0 bar Axial vacuum gauge	1/8" NPT Thread
VR	-1 ~ 0 bar Radial vacuum gauge	1/8" NPT Thread
S02	-0.2 bar Vacuum switch	1/8" NPT Thread

## This image shows a single sheet of white paper with horizontal blue ruling lines. The lines are evenly spaced and run across the width of the page. There are no margins, text, or other markings on the paper.