



EFMT Series

EVOTEK High Pressure Filters

Product Description

- Operating pressure up to 315 bar
- 110 l/min max. flow rate
- installation in manifold block mounting
- application in manifold block mounting
- compliant with industry relevant ISO standards(see ISO test below)

Technical Specifications

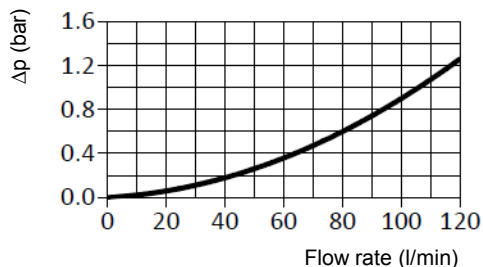
Application	Manifold mounting high pressure filter
Port Sizes:	15 mm
Flow Rate:	max. 110 l/min
Operating Pressure:	max. 315 bar
Burst Pressure:	min. 950 bar
Element Collapse Pressure:	10 bar (P series), 21 bar (M series) 210 bar (H series), 30 bar (Y series)
By-pass Opening Pressure:	$\Delta p=3.5\text{bar} +10\%$ or $\Delta p=6\text{ bar} +10\%$
Material	
Seals:	NBR or FPM (-25°C to 100°C)
Filter Head:	S.G. cast iron
Filter Bowl:	forged steel
Compatibility:	Suitable for mineral oils, lubrication oils, non-flam fluids, synthetic and rapidly biodegradable oils (for use with water or other fields please contact our technical department)
Tested according to ISO standards:	ISO2941 Collapse/burst resistance ISO2942 Fabrication integrity ISO2943 Material compatibility integrity ISO3723 Method for end load test ISO3724 Flow fatigue characteristics ISO3968 Pressure Drop vs. Flow Rate ISO16889 Multi-Pass Test

EFMT Manifold Mounting High Pressure Filter

Pressure Drop Graphs (Δp)

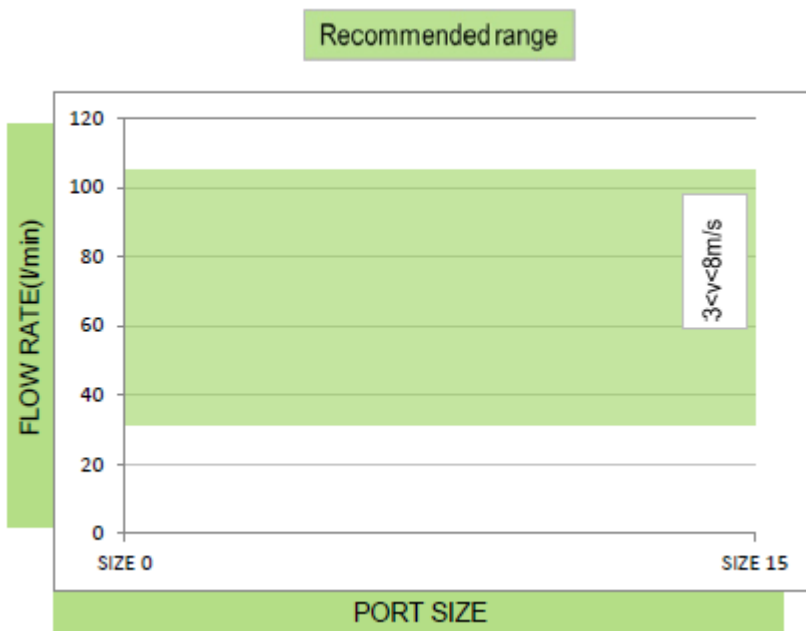
Pressure Drop of Filter Housing only

EFMT1, 2 & 3



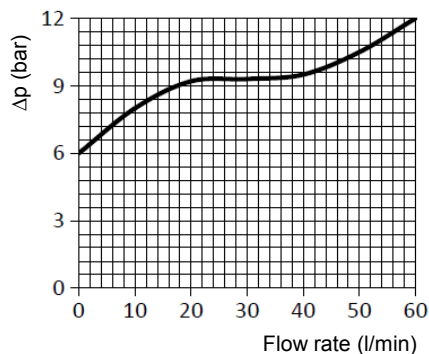
Graph of oil flow velocity

(we recommend to select size of the filter considering range of oil velocity between 3 to 8 m/s for pressure series)



Pressure drop graph on by-pass valve

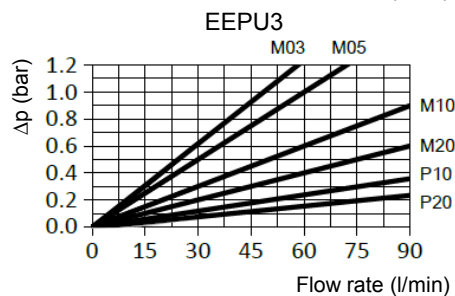
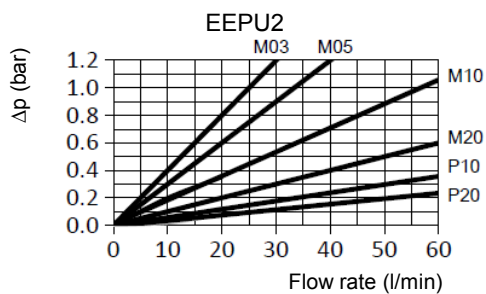
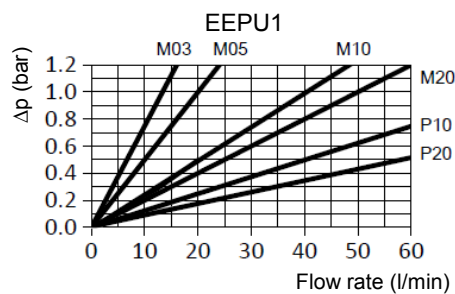
EFMT1,2 & 3



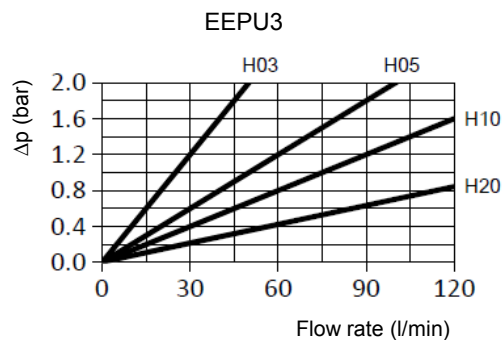
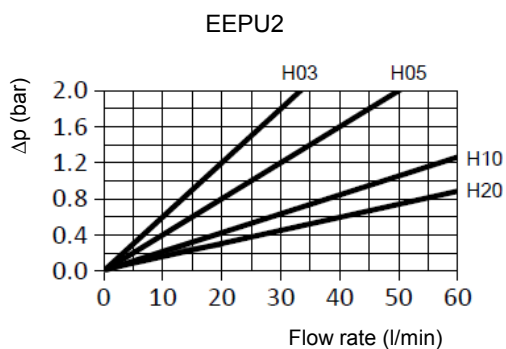
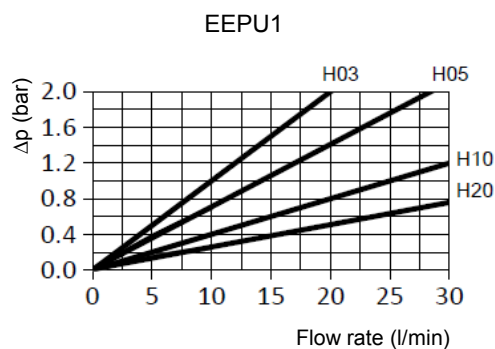
EFMT Manifold Mounting High Pressure Filter

Pressure Drop Graphs (Δp)

Pressure Drop with Clean Filter Elements (M and P filter media)

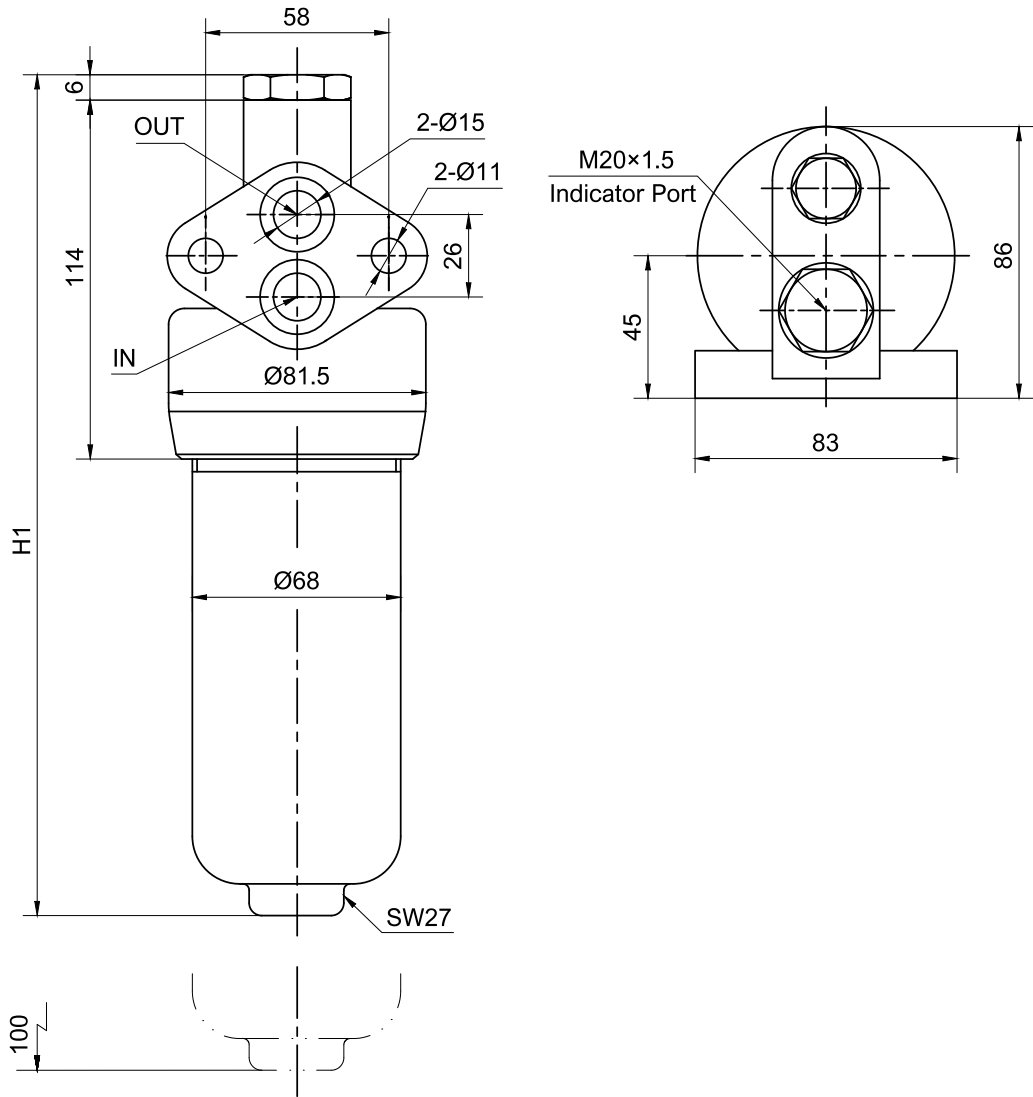


Pressure Drop with Clean Filter Elements (H filter media)



EFMT Manifold Mounting High Pressure Filter

Technical Drawings and Dimension



Type	Connection Port	Height	O-ring
	mm	mm	
EFMT1	15	194	19X2.65
EFMT2	15	225	19X2.65
EFMT3	15	320	19X2.65

EFMT Manifold Mounting High Pressure Filter

Order Codes

Filter Assembly Series	A	B	C	D	-	E	-	F	Element Series	A	D	E
EFMT	1	CB	11	B	-	M03	-	V50	EEPU	1	B	M03

Select the code for each filter (or element) feature according to your requirements and place it in the sequence (see example above) to create the corresponding product order code.

A Size Flow Rate		E Media Material	Filtration	Collapse Pressure	
1	30 l/min	P10	Cellulose	10µm	10 bar
2	60 l/min	P20	Cellulose	20µm	10 bar
3	110 l/min	M03	Fiberglass	5µm	21 bar
		M05	Fiberglass	7µm	21 bar
		M10	Fiberglass	12µm	21 bar
		M20	Fiberglass	21µm	21 bar
		H03	Fiberglass	5µm	210 bar
		H05	Fiberglass	7µm	210 bar
		H10	Fiberglass	12µm	210 bar
		H20	Fiberglass	21µm	210 bar
		Y25	Wire Mesh	25µm	30 bar
		Y60	Wire Mesh	60µm	30 bar
B Connection Ports					
CB	15mm				
C By-pass Valve					
00	NO				
09	3.5bar				
11	6.0bar				
D Seal					
B	NBR	F Indicator		Connection	
V	FPM	00	No		
		V50	5 bar visual	M20*1.5 Thread	
		V25	2.5 bar visual	M20*1.5 Thread	
		E50	5 bar visual/electrical	M20*1.5 Thread	
		E25	2.5 bar visual/electrical	M20*1.5 Thread	
		E50S	5 bar electrical	M20*1.5 Thread	
		E50T	5 bar electrical with thermostat (30°C)	M20*1.5 Thread	

Notes

This image shows a single sheet of white paper with horizontal blue ruling lines. The lines are evenly spaced and run across the width of the page. There are no margins, text, or other markings on the paper.